

Apartment "PASTORE" in the Hamlet Montefiorile

6 people – 3 bedrooms and 2 bathrooms

"Pastore" is one of the larger apartments in the hamlet – inside 100 m², cloister 27 m² and two terraces 27 m². There are 2 small gardens - one is located at the entrance filled by lavenders, the other one is located at the cloister and can be used by the guests.

Outside furniture - 2 sun-beds, 2 chairs, 2 deck chairs - one table and 6 chairs in the terrace - another table and 4 chairs + 2 arm-chairs and a small table - under the cloister.

"Pastore" is located in the upper part of the Hamlet close to both the swimming pool and the central piazza. There is an exclusive covered car-park.

The front door opens into a small landing with split level stairs up to the kitchen /lounge/diner to the right and left, and stairs down to the ground floor bedrooms directly in front of you.

The Kitchen/lounge/diner is a bright spacious area, with a large open fireplace. This room is open plan with a large archway behind the fireplace, and has the traditional Tuscan beamed ceilings and tiled floor. The kitchen is fitted along one wall and has gas hobs, microwave oven, dishwasher, fridge with freezer section and storage space.

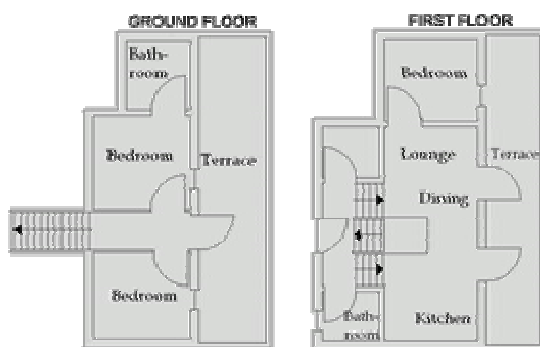
Please note that there is no conventional oven in this apartment. To one side there is a wooden dining table and chairs. The comfortable lounge area has sofas, chairs and tables, to the right of the room two doors open onto the furnished upper terrace.

Directly off of the lounge area is the first floor bedroom. This is a very bright room with a double wrought iron bed and large wardrobe. There is a door leading directly out onto the upper terrace, which is a perfect spot to sit having breakfast overlooking the spectacular views.

On the split level between the two floors to the left is a bathroom with shower, basin and WC, and to the right is the utility room which is where the washing machine is located. Downstairs on the ground floor there are a further two bedrooms, both with barrel vaulted ceilings and terracotta tiled floors.

The first has a wrought iron double bed, large triple wooden wardrobe and an en suite bathroom with shower. There is a door leading to the lower covered terrace which has a small planted area in front and views over the countryside.

The second bedroom on the lower floor has matching twin beds, large triple wooden wardrobe and a door out to the covered terrace, with its far reaching views.



A large comfortable three bed roomed villa, centrally located within the hamlet.